

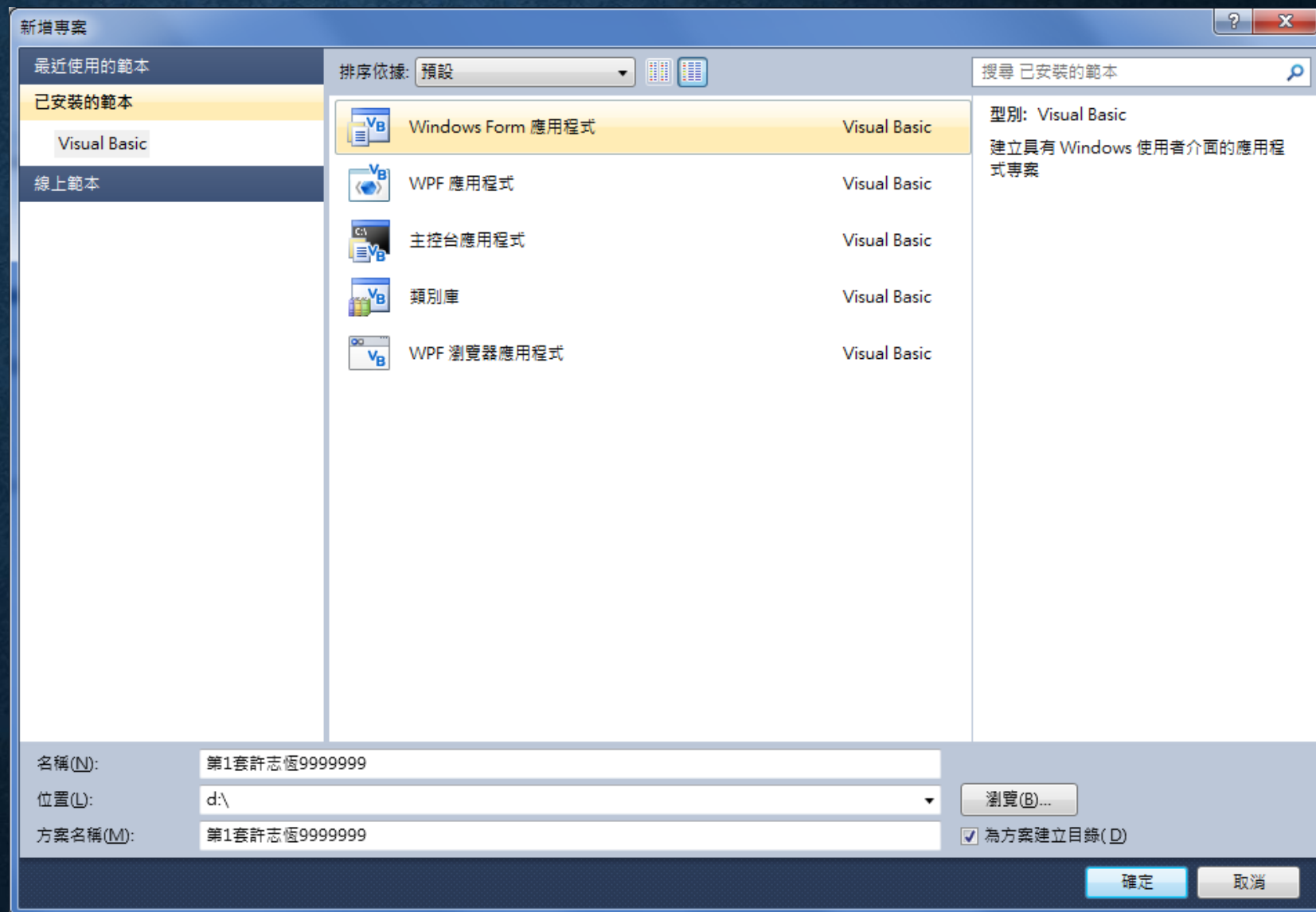
第1套試題 介面設定解說

丙級電腦軟體設計

許志恒

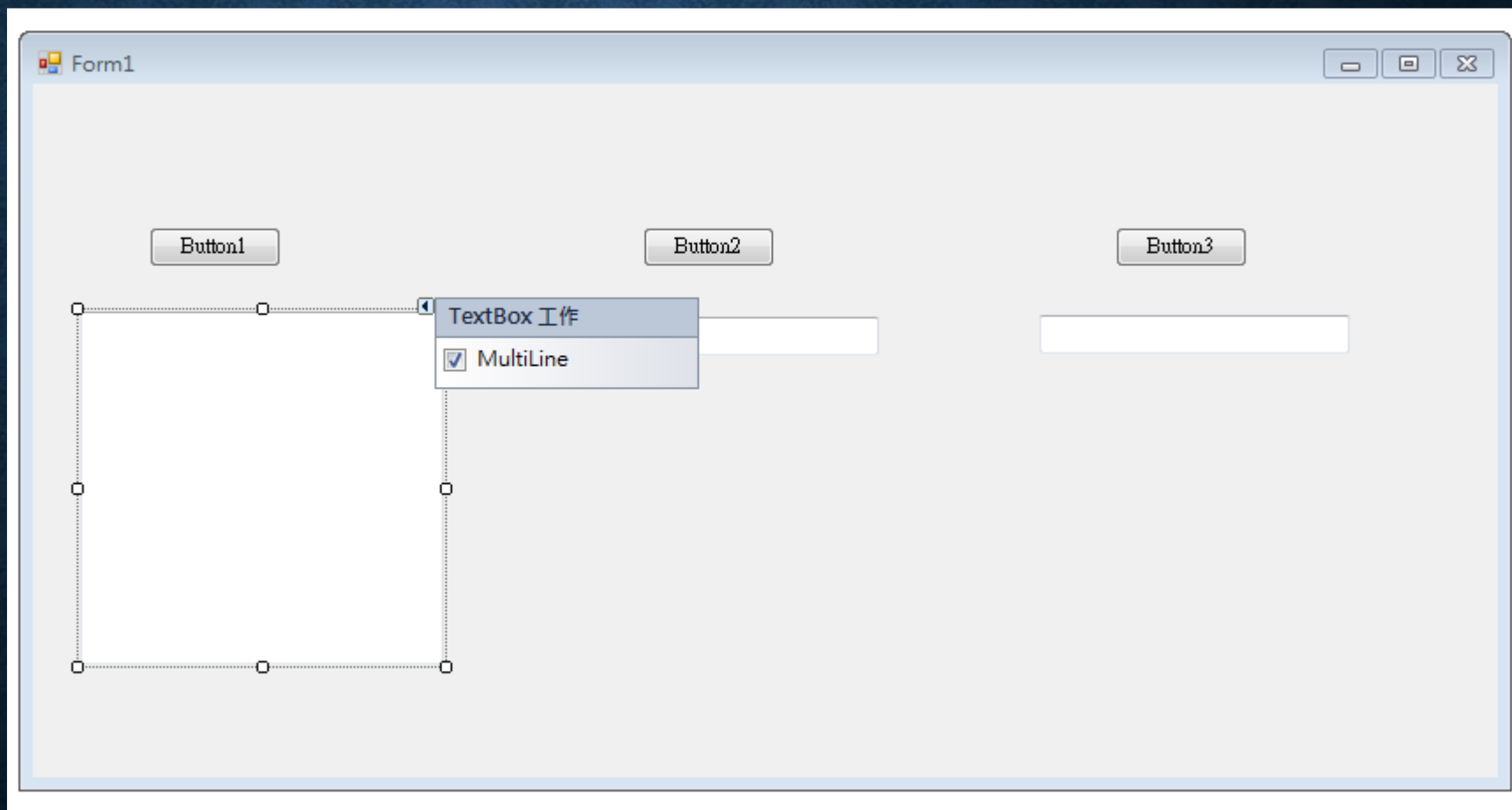
開專案

- 名稱：第1套姓名編號
 - 第1套0009999999
- 位置：d磁碟根目錄
 - d:\
- 勾選”為方案建立目錄”



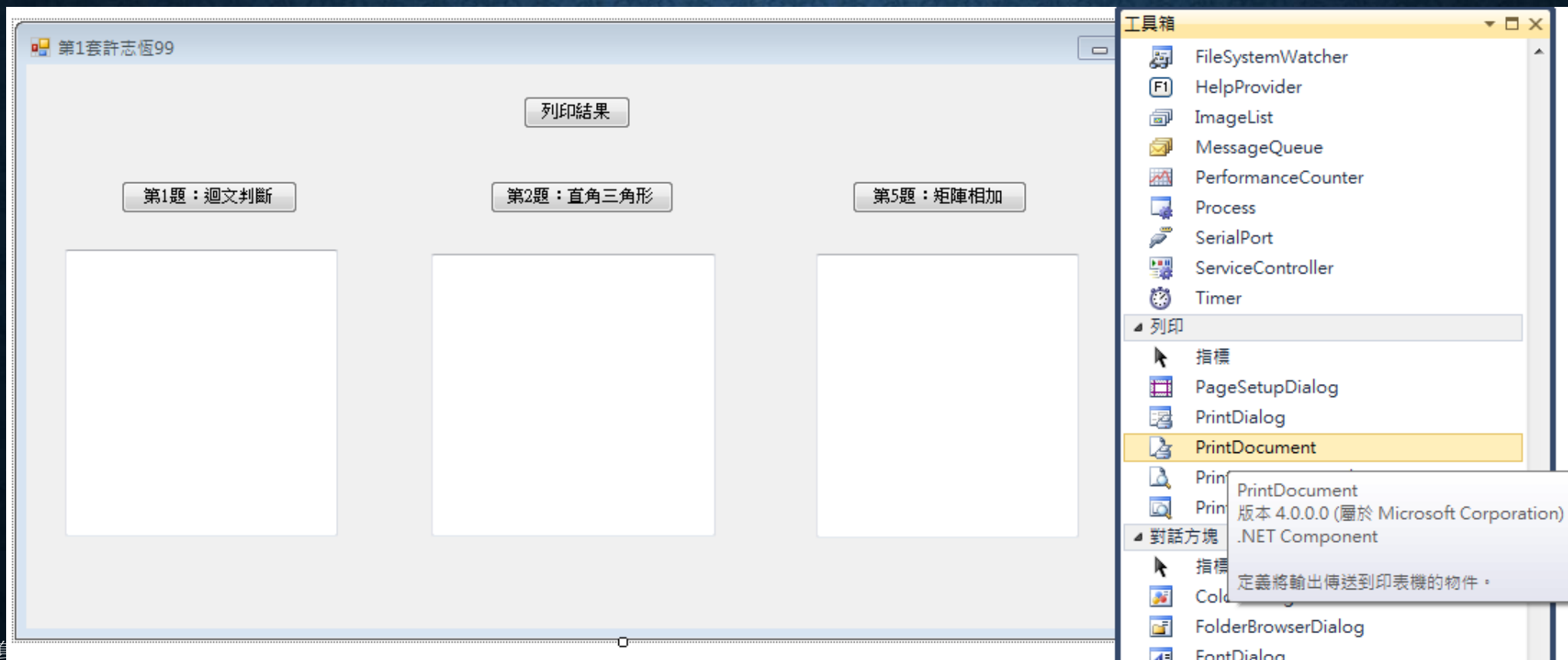
表單元件建立

- Button*3
 - 3個解題
 - 1個列印
- Textbox*3
 - 勾選多行



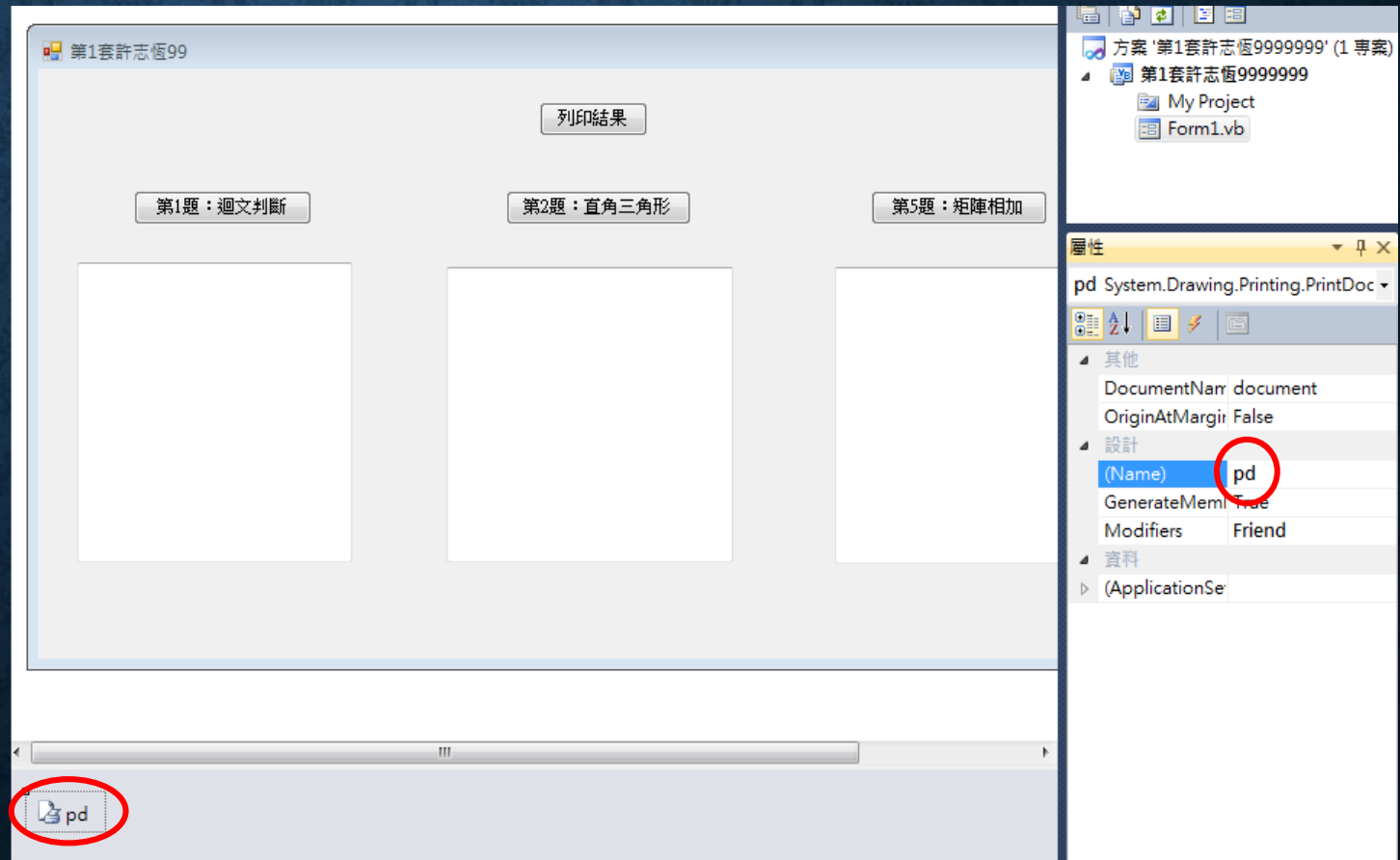
表單元件建立2

- Form1.txt
 - 第1套姓名座號
- 建立printDocument元件



表單元件建立3

- 將printDocument元件改名為pd



別忘記第1套試題用註解為每題標上標題

```
*****  
*11900-1060301 Program Start *  
*****  
Private Sub Button1_Click(ByVal sender As System.Object, ByVal e As System.EventArgs) Handles Button1.Click  
    Dim s, m, n  
    FileOpen(1, "d:\11900\1060301.sm", OpenMode.Input)  
    Input(1, n)  
    FileClose(1)  
    m = n  
    For i = 1 To 9  
        s = s & (m Mod 10)  
        m = m \ 10  
        If m = 0 Then Exit For  
    Next  
    If s = n Then  
        TextBox1.Text = "第1題結果：" & vbCrLf & n & " is a palindrome"  
    Else  
        TextBox1.Text = "第1題結果：" & vbCrLf & n & " is not a palindrome"  
    End If  
End Sub  
  
*****  
*11900-1060302 Program Start *  
*****  
Private Sub Button2_Click(ByVal sender As System.Object, ByVal e As System.EventArgs) Handles Button2.Click  
    Dim s, m, n  
    FileOpen(1, "d:\11900\1060302.sm", OpenMode.Input)  
    Input(1, n)  
    FileClose(1)  
    For i = 1 To n
```


列印結果事件程序

- 呼叫副程式pd.Print()

```
Private Sub Button4_Click(ByVal sender As System.Object, ByVal e As System.EventArgs) Handles Button4.Click  
    Call pd.Print()  
End Sub  
End Class
```

列印之副程式碼(雙擊PD物件進入設計)

- **Vbnewline**為換一新行指令
- 列印指令**e.graphics.drawstring(rlt,mfont,mcolor,x,y)**
- **Mfont**指定為文字方塊1的樣式
- **Mcolor**指定為刷黑。 **x**和**y**為座標，均給定100

```
Private Sub pd_PrintPage(ByVal sender As System.Object, ByVal e As System.Drawing.Printing.PrintPageEventArgs)
    Dim rlt As String = ""
    Dim nl = vbNewLine
    rlt = rlt & "姓名：[許志恆]          術科測試編號[999999]" & nl
    rlt = rlt & "座號：[99]          應 檢 日 期：[108/06/14]" & nl & nl & nl
    rlt = rlt & TextBox1.Text & nl & nl
    rlt = rlt & TextBox2.Text & nl & nl
    rlt = rlt & TextBox3.Text & nl
    Dim mfont = TextBox1.Font
    Dim mcolor = Brushes.Black
    Dim x = 100
    Dim y = 100
    e.Graphics.DrawString(rlt, mfont, mcolor, x, y)
End Sub
```


姓名：[許志恆] 術科測試編號[999999]
座號：[99] 應 檢 日 期：[108/06/14]

第1題結果：
12321 is a palindrome

第2題結果：
1
12
123
1234
12345
123456
1234567

第5題結果：
[6 8]
[10 12]

講解完畢